

Shutter Summary and Prices

Shutter Refurbishment Process

- Shutters removed, inspected and old ironmongery discarded.
- Excess paint removed and shutters sanded down and trimmed as necessary.
- Main leaves hung with new butt hinges, and the inner leaves with back flap hinges.
- Leaves are adjusted for best fit.
- New shutter knobs and a new centre catch supplied
- Larger shutter bars can be supplied if required from escbrass.co.uk in 1ft, 2ft and 3ft sizes.
- Fitting costs and larger shutter bars are not included in the price.



Typical split shutter set with 2ft shutter bar

Typical cost for Shutter set 1.8m high	Cost for Split Shutter set 1.8m high
£250 + VAT	£450 + VAT
Split Shutters have the leaves as separate pieces and require extra time and ironmongery.	

Replacement Shutter Leaves

If the main leaves are missing or need replaced, we will manufacture replacements. These are usually manufactured in matching pairs and the price will vary depending on how ornate the replacements are.

If the centre leaves need replaced, these will normally be manufactured from solid redwood, rebated along the central edge and have bread-board ends to minimise movement.



Manufacture of a replacement split leaf in our workshop.

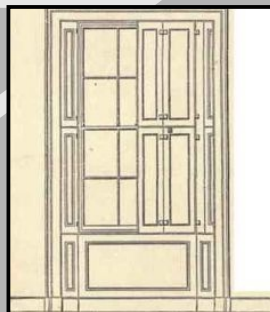
Replacement Main Shutter Leaves	Replacement Centre Leaves
£300 - £500 + VAT	£80 - 150 + VAT
Price is PER LEAF	Price is for EACH SINGLE LEAF

Replacement Shutter and Panel-Work

A typical installation from scratch involves fitting new wide architraves around the window. This forms the recess to house the shutter. Three new panels are then manufactured and installed below the window as well as an angled panel at the top of the recess.

The shutters are then hung and swing into the recess.

Plaster-work may be required behind the shutter recess to tidy things up and a simple bull nosed trim is fitted to form the window ledge.



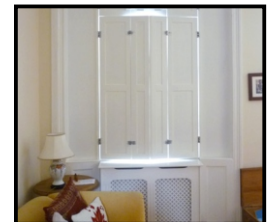
Shutter Painting

Includes:

- relevant prep work
- Painting of the shutters (inside and out)
- painting of panel work and architraves
- primer, undercoat and top coat

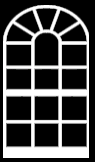
Does **NOT** include:

Painting of the actual window



Cost for a single window installation
£1950 + VAT
Price is for a typical installation and window size of 3ft x 6ft

Shutter Painting
£250 - £300 + VAT
Price is dependant on window size



Shutter Painting

Includes:

- relevant prep work
- Painting of the shutters (inside and out)
- painting of panel work and architraves
- primer, undercoat and top coat

Does **NOT** include:

Painting of the actual window



Shutter Painting

£250 - £300 + VAT

Price is dependant on window size